

**DISCLAIMER**

While every effort will be made to keep the legislation accurate and up-to-date, no warranty of any kind, implied, expressed or statutory, including but not limited to any warranties of title, non-infringement of third party rights, merchantability, satisfactory quality, fitness for a particular purpose and freedom from computers virus, is given in conjunction with this website, or any information and materials therein.

No warranty is given that access to any information or materials on this website, or this website as a whole will be provided uninterrupted or free from errors or that any identified defect will be corrected; further, no warranty is given that this website or any information or materials are free from any virus or other malicious, destructive or corrupting code, agent, program or macros.

Legislation is reproduced on this website with the permission of Government of Singapore. Acts of Parliament are available without charge, and updated monthly, at the Singapore Government Statutes Online website (<http://statutes.agc.gov.sg>).

**Free Trade Zones Act**  
**(Chapter 114, Section 3(1))**

**Free Trade Zones (Declared Areas) Notification**

N 3

G.N. No. S 462/1991

REVISED EDITION 2000

(31st January 2000)

[11th October 1991]

**Citation**

1. [This Notification](#) may be cited as the [Free Trade Zones \(Declared Areas\) Notification](#).

**Free trade zones**

2. The areas set out in [the First Schedule](#) are hereby declared to be free trade zones.

**FIRST SCHEDULE**

(1) *Tanjong Pagar Terminal and Keppel Terminal*

All that area occupied by “TANJONG PAGAR TERMINAL AND KEPPEL TERMINAL — FREE TRADE ZONE” containing an area of approximately 1,809,346 square metres and bounded by Telok Blangah Road, Keppel Road, East Coast Parkway, East Lagoon and Keppel Harbour.

The boundary commences at the western-most corner of the aforesaid “TANJONG PAGAR TERMINAL AND KEPPEL TERMINAL — FREE TRADE ZONE” which point’s co-ordinates are North 27,288.561 metres and East 26,954.409 metres of the Singapore Land Authority SVY 21 Datum and runs approximately as follows:

<i>Northing</i>	<i>Easting</i>
27,288.561	26,954.409
27,315.175	26,954.984
27,318.082	26,954.964
27,337.162	26,963.051
27,351.153	26,965.498
27,358.912	26,970.195
27,361.688	26,971.963

27,372.455	26,981.430
27,373.654	26,983.049
27,377.914	26,981.702
27,378.740	26,981.327
27,381.150	26,981.504
27,383.022	26,985.973
27,379.215	26,987.591
27,379.415	26,988.301
27,385.683	26,994.936
27,393.209	27,004.604
27,398.341	27,012.101
27,400.033	27,015.329
27,413.454	27,014.838
27,428.445	27,041.817
27,431.563	27,080.573
27,464.607	27,140.062
27,468.036	27,138.109
27,468.228	27,138.316
27,469.051	27,137.767
27,560.185	27,301.680
27,600.507	27,283.438
27,629.183	27,316.940
27,613.965	27,329.420
27,639.169	27,359.872
27,654.806	27,346.576
27,661.056	27,353.573
27,662.665	27,353.236
27,665.939	27,350.309
27,667.169	27,351.686
27,675.586	27,339.379
27,678.822	27,334.349
27,685.652	27,323.978
27,693.994	27,314.921
27,697.606	27,311.572

27,706.728	27,313.336
27,720.638	27,319.210
27,725.603	27,322.394
27,732.500	27,328.193
27,740.425	27,336.280
27,754.637	27,351.036
27,774.702	27,371.864
27,788.815	27,386.922
27,798.287	27,394.565
27,809.373	27,399.588
27,821.365	27,401.671
27,833.495	27,400.681
27,838.901	27,404.912
27,866.770	27,437.288
27,876.639	27,445.861
27,884.427	27,451.484
27,911.673	27,469.999
27,929.623	27,486.251
27,970.834	27,522.963
27,993.227	27,544.716
28,016.965	27,570.518
28,034.198	27,589.873
28,084.594	27,644.829
28,097.615	27,660.711
28,105.347	27,670.773
28,120.318	27,696.919
28,137.003	27,715.711
28,149.812	27,727.424
28,165.873	27,746.083
28,168.250	27,751.162
28,169.435	27,752.830
28,177.733	27,758.767
28,199.879	27,786.439
28,200.750	27,787.858

28,207.214	27,795.396
28,209.233	27,798.145
28,244.092	27,842.131
28,256.447	27,862.379
28,260.953	27,866.487
28,269.949	27,876.876
28,277.875	27,888.550
28,271.185	27,896.661
28,251.772	27,920.335
28,254.900	27,923.267
28,237.421	27,944.783
28,224.528	27,952.073
28,216.033	27,961.828
28,217.055	27,981.487
28,217.382	27,988.546
28,219.238	28,041.733
28,293.862	28,039.157
28,296.737	28,123.789
28,292.988	28,123.971
28,293.382	28,134.752
28,293.826	28,147.079
28,293.173	28,147.103
28,293.181	28,148.450
28,293.888	28,148.515
28,294.433	28,162.779
28,295.205	28,180.232
28,295.388	28,183.873
28,295.663	28,188.835
28,296.103	28,195.700
28,296.384	28,199.704
28,297.097	28,209.756
28,297.371	28,216.992
28,297.987	28,232.616
28,297.575	28,232.645

28,297.679	28,234.783
28,298.039	28,234.737
28,298.170	28,236.569
28,297.761	28,236.995
28,295.977	28,238.054
28,294.545	28,238.756
28,292.492	28,239.203
28,290.449	28,239.461
28,280.507	28,239.855
28,279.301	28,242.334
28,277.559	28,244.773
28,275.173	28,246.566
28,272.261	28,247.480
28,251.124	28,248.225
28,251.192	28,253.853
28,241.668	28,254.206
28,206.440	28,255.380
28,213.594	28,446.423
28,214.010	28,447.397
28,214.038	28,448.623
28,213.688	28,449.334
28,213.870	28,454.811
28,214.442	28,454.787
28,214.493	28,456.136
28,213.919	28,456.155
28,220.074	28,625.930
28,220.274	28,625.923
28,220.316	28,627.268
28,220.099	28,627.276
28,220.351	28,633.383
28,222.773	28,695.635
28,236.930	28,695.411
28,260.479	28,694.641
28,266.305	28,688.483

28,290.861	28,687.516
28,292.144	28,716.138
28,281.504	28,716.614
28,281.578	28,719.446
28,276.450	28,719.571
28,276.695	28,728.098
28,278.482	28,760.958
28,279.741	28,770.186
28,283.471	28,781.374
28,291.727	28,796.185
28,293.378	28,798.955
28,294.678	28,801.702
28,304.683	28,830.095
28,143.519	28,902.777
28,143.519	28,907.018
28,143.793	28,911.505
28,144.630	28,915.387
28,146.665	28,918.799
28,149.861	28,922.202
28,153.709	28,924.848
28,158.030	28,926.615
28,188.743	28,912.941
28,203.801	28,947.700
28,176.248	28,960.033
28,179.347	28,966.446
28,182.609	28,973.196
28,189.526	28,988.965
28,190.334	28,990.765
28,187.192	28,992.133
28,162.044	29,003.283
28,158.511	29,007.277
28,156.829	29,009.839
28,155.694	29,012.622
28,155.289	29,015.499

28,155.275	29,021.272
28,157.888	29,028.168
28,160.179	29,030.537
28,182.444	29,052.492
28,206.369	29,075.512
28,309.629	29,175.792
28,310.138	29,176.432
28,314.891	29,185.470
28,319.268	29,193.790
28,322.874	29,204.336
28,323.369	29,221.990
28,323.790	29,236.872
28,324.192	29,251.881
28,324.923	29,279.653
28,325.327	29,296.683
28,323.684	29,308.619
28,321.863	29,321.685
28,320.386	29,332.813
28,318.867	29,344.285
28,317.647	29,353.526
28,316.331	29,362.723
28,312.790	29,398.566
28,308.846	29,437.292
28,298.788	29,436.506
28,299.193	29,432.366
28,282.821	29,418.139
28,228.771	29,478.082
28,234.171	29,483.259
28,253.850	29,501.045
28,277.983	29,474.291
28,297.214	29,452.972
28,298.156	29,446.858
28,299.942	29,444.978
28,303.939	29,444.453

28,301.832	29,456.225
28,299.941	29,467.512
28,298.479	29,476.076
28,296.616	29,487.504
28,295.294	29,495.946
28,293.933	29,504.895
28,292.127	29,516.752
28,290.768	29,525.688
28,289.633	29,534.551
28,288.583	29,546.403
28,288.035	29,555.331
28,287.783	29,564.309
28,287.909	29,576.266
28,288.240	29,585.294
28,288.778	29,594.177
28,289.957	29,606.242
28,291.121	29,615.187
28,292.530	29,624.104
28,294.830	29,635.814
28,296.857	29,644.655
28,299.093	29,653.331
28,302.434	29,664.741
28,305.202	29,673.364
28,308.153	29,681.860
28,311.909	29,691.227
28,316.751	29,702.180
28,320.679	29,710.418
28,324.761	29,718.301
28,330.347	29,728.768
28,334.631	29,736.812
28,339.071	29,744.630
28,344.998	29,755.060
28,349.449	29,762.919
28,353.847	29,770.663

28,359.742	29,781.089
28,364.208	29,788.978
28,368.630	29,796.768
28,374.561	29,807.247
28,379.015	29,815.090
28,383.481	29,822.974
28,389.232	29,833.618
28,393.251	29,841.690
28,396.958	29,849.819
28,401.728	29,860.845
28,405.176	29,869.131
28,408.404	29,877.492
28,411.556	29,886.317
28,415.369	29,897.567
28,417.918	29,906.246
28,420.767	29,916.774
28,420.658	29,917.023
28,382.205	30,005.821
28,381.488	30,005.599
28,370.914	30,029.930
27,341.159	30,031.019
27,341.122	29,995.624
27,341.447	29,991.642
27,285.471	29,930.011
27,112.430	30,086.125
27,111.065	30,086.485
27,110.223	30,086.136
27,109.371	30,085.124
27,110.173	30,084.349
27,030.637	29,996.286
27,031.421	29,995.579
27,031.529	29,995.161
27,030.853	29,994.363
27,029.943	29,991.865

27,029.860	29,988.866
27,031.261	29,986.731
27,033.963	29,984.310
27,033.990	29,983.887
27,288.386	29,754.485
27,532.704	29,533.896
27,701.845	29,381.276
27,705.730	29,377.742
27,569.127	29,226.270
27,569.506	29,225.869
27,563.658	29,219.389
27,277.850	29,446.321
27,220.347	29,491.732
27,218.182	29,492.958
27,215.737	29,493.562
27,213.356	29,493.486
27,210.806	29,492.610
27,210.631	29,492.835
27,122.366	29,410.332
27,122.578	29,410.121
27,121.056	29,407.724
27,120.565	29,405.151
27,121.014	29,402.551
27,122.474	29,400.290
27,176.869	29,341.473
27,792.537	28,681.009
27,793.534	28,673.972
27,794.609	28,664.939
27,795.666	28,652.547
27,796.732	28,639.004
27,797.102	28,625.791
27,796.841	28,612.939
27,769.631	27,860.065
27,764.032	27,854.695

27,720.028	27,776.643
27,657.202	27,665.809
27,652.809	27,657.386
27,652.547	27,657.533
27,512.874	27,411.859
27,404.963	27,220.955
27,293.460	27,024.529
27,292.603	27,022.266
27,288.662	27,007.212
27,288.344	27,004.825
27,288.511	26,975.614

to the point of commencement. The boundary of “TANJONG PAGAR TERMINAL AND KEPPEL TERMINAL — FREE TRADE ZONE” is delineated in Plan I set out in the Second Schedule.

[S 637/2011 wef 01/12/2011]

(2) *Jurong Port (including Pulau Damar Laut)*

All that area comprised in Lots 765L(PT), 766C, 1263L, 1552P, 1553T, 1554A, 1555K, 1625T, 1821A, 2177C, 2523P(PT), 2525A, 2528X, 2852P, 2901X(PT), 3543T, 3782P, 3845X, 3850C(PT), 3855T, 3856A, 3857K, 4112P, 4113T, 3600P(PT), 768W(PT), 477A(PT), 3601T(PT) and 3854P including the bridge in the Port area crossing Selat Damar Laut in MK 6, 37 Jurong Port Road, Singapore 619110 occupied by “JURONG PORT (including PULAU DAMAR LAUT) — FREE TRADE ZONE” containing an area of about 1241900 square metres and bounded approximately as follows:

Commencing at the south westernmost corner of the aforesaid “JURONG PORT (including PULAU DAMAR LAUT) — FREE TRADE ZONE” which point is 31329.870 metres North and 14486.053 metres East of the Singapore Land Authority SVY 21 Datum, the boundaries run along successive lines of co-ordinates approximately as follows:

<i>Northing</i>	<i>Easting</i>
31485.949	14486.785
31698.405	14489.076
31723.545	14489.432
31905.847	14491.253
32016.931	14493.266
32112.648	14494.103
32169.595	14490.402
32201.976	14484.090
32220.534	14483.434
32220.560	14493.059
32221.305	14492.984
32355.556	14494.517

32367.299	14491.730
32373.163	14490.219
32373.725	14489.475
32374.155	14485.819
32374.319	14484.418
32375.108	14475.186
32377.251	14474.274
32377.477	14470.675
32378.532	14467.085
32381.044	14464.992
32383.203	14464.562
32383.416	14472.233
32383.250	14472.670
32382.971	14473.196
32380.694	14474.766
32379.648	14476.106
32378.775	14477.388
32377.407	14480.039
32376.699	14482.950
32376.115	14485.883
32376.062	14497.562
32381.326	14498.315
32389.636	14502.756
32393.180	14505.758
32395.863	14509.049
32397.525	14512.002
32478.603	14512.535
32478.520	14514.209
32522.223	14514.490
32532.339	14695.879
32543.717	14732.499
32729.003	14734.574
32727.442	14910.085
32725.639	15040.935

32576.219	15011.216
32497.904	14996.638
32497.165	14999.590
32495.316	15008.419
32494.630	15011.403
32479.342	15011.258
32464.752	15014.513
32441.796	15009.883
32440.810	15015.124
32440.331	15016.694
32438.954	15016.402
32434.592	15040.222
32441.036	15046.896
32442.780	15051.687
32440.769	15061.582
32436.431	15082.998
32436.001	15082.924
32434.772	15089.117
32428.262	15096.858
32424.600	15101.429
32434.215	15109.599
32449.465	15116.100
32467.293	15122.995
32483.166	15129.266
32492.736	15131.669
32499.737	15134.501
32506.308	15137.548
32510.422	15139.792
32507.558	15143.167
32503.287	15148.256
32460.853	15198.160
32459.044	15200.288
32463.812	15204.290
32461.119	15207.476

32475.158	15219.171
32480.960	15221.542
32482.639	15222.644
32522.801	15251.882
32521.442	15256.780
32474.998	15311.202
32474.900	15313.743
32475.403	15315.166
32471.545	15319.543
32401.963	15401.965
32412.525	15411.126
32299.039	15546.104
32120.103	15395.570
32119.928	15395.740
32118.760	15394.906
32119.118	15394.487
32107.620	15385.632
32089.540	15370.392
32030.933	15440.142
32162.386	15551.174
32217.007	15596.819
32218.231	15595.987
32232.447	15607.872
32199.758	15646.747
32241.293	15664.452
32205.267	15749.119
32169.188	15832.913
32099.885	15803.502
32011.915	15765.841
31965.975	15746.188
31886.667	15844.394
31958.230	16053.543
32081.402	16011.355
32081.728	16012.296

32081.586	16012.343
32093.955	16048.510
32094.110	16048.464
32094.371	16049.208
31969.926	16091.818
31952.425	16097.883
31551.180	16235.196
31399.656	16287.187
31395.765	16276.084
31396.761	16275.160
31396.653	16275.040
31383.507	16286.638
31383.621	16286.769
31383.909	16286.559
31384.204	16286.962
31379.954	16290.653
31377.345	16287.729
31381.607	16283.998
31382.219	16284.625
31381.952	16284.869
31382.124	16285.065
31395.275	16273.515
31395.172	16273.400
31394.305	16274.137
31383.746	16268.967
31426.587	16181.509
31437.403	16160.918
31592.447	15844.576
31678.973	15668.199
31796.650	15528.438
31796.759	15528.100
31908.317	15396.273
31970.599	15322.334
32041.354	15238.355

32160.826	15096.641
32303.101	14927.842
32306.368	14652.610
32306.901	14577.455
32315.310	14577.455
32315.603	14552.752
32312.427	14552.711
32312.576	14544.718
32320.470	14544.844
32320.401	14552.815
32317.320	14552.775
32317.048	14577.455
32335.038	14577.455
32355.238	14544.687
32347.490	14524.678
32353.917	14520.720
32355.305	14516.919
32221.031	14515.426
32204.560	14515.254
32189.833	14515.125
32178.131	14515.008
32162.630	14516.789
32151.321	14520.869
32141.227	14526.207
32126.151	14534.823
32117.455	14539.713
32110.840	14543.878
32092.486	14554.725
32087.000	14560.954
32082.336	14571.352
32085.420	14576.445
32084.977	14576.697
32083.971	14575.009
32083.035	14575.589

32083.230	14575.951
32079.195	14578.355
32072.594	14593.071
32081.517	14607.711
32081.120	14607.949
32080.035	14606.223
32079.071	14606.812
32079.249	14607.235
32075.783	14609.337
32074.777	14689.365
32064.969	14715.251
32055.444	14736.728
32049.361	14748.418
32096.327	14788.104
31967.921	14940.488
31803.194	15135.785
31655.181	15311.372
31504.060	15490.657
31467.697	15460.099
31463.316	15467.437
31455.119	15477.373
31448.585	15480.186
31443.639	15481.405
31436.863	15480.607
31430.362	15477.647
31399.173	15454.773
31368.516	15433.742
31348.464	15433.511
31348.152	15460.254
31346.860	15580.180
31346.554	15605.533
31333.310	15605.477
31333.142	15621.892
31334.691	15621.845

31334.632	15623.864
31333.162	15623.876
31332.985	15640.292
31335.476	15640.355
31335.371	15647.843
31332.862	15647.850
31332.638	15672.678
31333.441	15672.743
31333.469	15676.115
31332.552	15676.159
31332.219	15678.591
31332.142	15680.321
31332.336	15682.706
31334.905	15682.708
31335.067	15690.033
31327.626	15690.260
31327.447	15682.871
31329.775	15682.792
31329.659	15679.412
31330.055	15676.685
31330.331	15647.860
31327.885	15647.724
31327.968	15640.275
31330.428	15640.264
31330.805	15605.463
31317.607	15605.202
31319.411	15439.645
31321.302	15267.241
31323.025	15106.630
31325.167	14911.225
31326.319	14805.804
31327.246	14715.730
31328.458	14607.845

to the point of commencement. The boundary of “JURONG PORT (including PULAU DAMAR LAUT) — FREE TRADE ZONE” is delineated in Plan II set out in [the Second Schedule](#).

(3) *Sembawang Wharves*

All that area occupied by “SEMBAWANG WHARVES — FREE TRADE ZONE” containing an area of approximately 312,500 square metres and bounded by Fiji Road, Jamaica Road, Sembawang Shipyard, H M Dockyard, Stores Road, Stores Basin, Sembawang Park and Deptford Road.

The boundary commences at the western-most corner of the aforesaid “SEMBAWANG WHARVES – FREE TRADE ZONE” which point’s co-ordinates are North 49,342.274 metres and East 27,216.569 metres of the Singapore Land Authority SVY21 Datum and runs approximately as follows:

<i>Northing</i>	<i>Easting</i>
49,342.274	27,216.569
49,383.623	27,239.331
49,386.861	27,240.369
49,406.042	27,251.743
49,408.954	27,256.526
49,439.994	27,314.658
49,470.282	27,370.933
49,478.734	27,386.622
49,485.217	27,398.838
49,490.240	27,408.064
49,489.903	27,407.978
49,486.849	27,412.203
49,495.094	27,426.829
49,506.771	27,447.666
49,522.803	27,476.531
49,558.642	27,542.619
49,584.126	27,589.381
49,563.317	27,625.639
49,545.591	27,656.885
49,524.579	27,693.334
49,512.606	27,714.162
49,506.148	27,720.383
49,498.448	27,723.726
49,49,0.251	27,723.287
49,367.320	27,654.402
49,327.834	27,633.993
49,324.491	27,634.413

49,324.480	27,634.615
49,321.503	27,639.675
49,319.456	27,642.940
49,318.621	27,644.951
49,306.532	27,666.063
49,309.041	27,667.707
49,362.714	27,698.153
49,352.393	27,716.567
49,345.243	27,729.151
49,337.805	27,742.036
49,336.487	27,741.436
49,335.211	27,742.644
49,332.835	27,746.785
49,335.447	27,748.622
49,328.286	27,761.364
49,323.858	27,769.138
49,299.424	27,811.861
49,298.193	27,814.483
49,298.921	27,816.904
49,294.152	27,826.134
49,418.344	27,896.971
49,436.914	27,907.607
49,432.845	27,915.070
49,428.228	27,923.827
49,409.221	27,957.193
49,402.618	27,953.432
49,397.173	27,962.990
49,403.777	27,966.751
49,394.125	27,983.695
49,331.379	27,947.978
49,310.869	27,936.303
49,270.023	27,913.052
49,144.539	27,840.798
49,135.868	27,855.999

49,120.928	27,847.477
49,060.531	27,953.363
49,204.882	28,035.533
49,49,0.843	28,198.423
49,523.064	28,216.814
49,523.813	28,217.620
49,524.347	28,218.694
49,534.917	28,277.248
49,532.348	28,277.649
49,531.656	28,282.298
49,531.189	28,292.387
49,530.623	28,302.471
49,528.379	28,312.319
49,526.356	28,322.520
49,524.826	28,332.200
49,524.009	28,341.565
49,512.554	28,332.037
49,505.888	28,331.358
49,502.035	28,329.033
49,494.968	28,331.228
49,464.222	28,319.241
49,459.292	28,316.802
49,456.660	28,316.198
49,443.757	28,311.595
49,411.690	28,318.489
49,391.358	28,325.782
49,320.824	28,294.648
49,287.256	28,262.325
49,216.070	28,194.101
49,206.827	28,190.555
49,190.406	28,184.503
49,170.057	28,176.685
49,119.571	28,157.523
49,039.203	28,127.767

49,038.474	28,125.064
49,034.967	28,121.225
49,019.994	28,114.291
48,997.663	28,103.972
48,986.153	28,096.359
48,946.197	28,086.729
48,891.087	28,037.195
48,890.310	28,015.309
48,890.263	28,012.609
48,918.562	27,977.621
48,958.734	27,896.637
48,959.885	27,894.195
48,960.848	27,891.672
48,968.830	27,868.403
49,031.306	27,761.988
49,089.903	27,718.284
49,093.244	27,712.477
49,065.978	27,696.904
49,078.106	27,676.425
49,094.024	27,685.852
49,101.529	27,688.623
49,107.770	27,687.208
49,125.633	27,656.414
49,127.151	27,654.182
49,130.745	27,650.018
49,132.107	27,647.687
49,132.977	27,645.131
49,133.531	27,642.488
49,144.421	27,623.487
49,151.382	27,611.341
49,146.732	27,605.203
49,114.757	27,587.394
49,116.313	27,585.187
49,154.850	27,517.487

49,180.186	27,473.456
49,191.550	27,463.665
49,195.567	27,459.344
49,200.601	27,451.763
49,203.512	27,443.565
49,207.536	27,431.836
49,214.886	27,419.105
49,236.372	27,382.089
49,258.798	27,374.738
49,299.275	27,306.430
49,318.316	27,273.429
49,332.545	27,235.404

to the point of commencement. The boundary of “SEMBAWANG WHARVES — FREE TRADE ZONE” is delineated in Plan III set out in [the Second Schedule](#).

*[S 637/2011 wef 01/12/2011]*

(4) *[Deleted by S 568/2009 wef 20/11/2009]*

(5) *Changi Airport Cargo Terminal Complex*

All that area comprised part of Lot Nos. 1288Cpt, 3363Kpt, 4288Tpt, 4289Apt, 4290Ppt and 4294Npt and Lot Nos. 1246V and 1273L occupied by “CHANGI AIRPORT CARGO TERMINAL COMPLEX — FREE TRADE ZONE” containing an area of about 474,784 square metres and bounded approximately as follows:

The boundary commences at the eastern-most corner of “CHANGI AIRPORT CARGO TERMINAL COMPLEX — FREE TRADE ZONE” which point is 40,701.9 metres North and 46,632.8 metres East of the Survey Department origin of co-ordinates, the boundary runs along successive lines of fence of bearings and distances as follows:

<i>Bearing</i>	<i>Distance in metres</i>
196° 02'	8.6
197° 00'	7.2
196° 26'	29.7
196° 40'	28.4
196° 20'	91.2
196° 28'	47.8
202° 56'	38.8
203° 00'	26.8

to a point where it meets a line, thence along that and other successive lines of bearings and distances as follows:

<i>Bearing</i>	<i>Distance in metres</i>
219° 22'	35.5

254° 02'	7.2
239° 14'	6.1
227° 28'	4.4
217° 35'	4.5
203° 08'	7.7
184° 37'	7.9
219° 22'	15

to a point where it meets a fence, thence along successive lines of fence of bearings and distances as follows:

<i>Bearing</i>	<i>Distance in metres</i>
289° 45'	8.9
283° 44'	14.8
281° 53'	20.6
282° 06'	22.9
357° 15'	14.1
356° 41'	20.2
292° 28'	16.1
263° 47'	15.1
249° 19'	12
237° 43'	9.1
226° 17'	9.1
218° 14'	6
203° 05'	667.1
113° 11'	79.5
112° 59'	63.4

to a point where it meets a line, thence along the line on a bearing of 203° 01' for a distance of 118.1 metres to a point where it meets a fence, thence along successive lines of fence of bearings and distances as follows:

<i>Bearing</i>	<i>Distance in metres</i>
113° 04'	82.4
203° 03'	205.4

to a point where it meets a line, thence along that and other successive lines of bearings and distances as follows:

<i>Bearing</i>	<i>Distance in metres</i>
203° 03'	19.4

113° 01'	9.6
203° 01'	288.5
293° 02'	34
203° 02'	22
293° 02'	46.3
203° 02'	75.3
293° 01'	49.2
23° 08'	49.3

to a point where it meets a fence, thence along successive lines of fence of bearings and distances as follows:

<i>Bearing</i>	<i>Distance in metres</i>
23° 18'	26.5
292° 53'	35.1

to meet a line, thence along the line of a bearing 286° 56' and distance of 2 metres to the corner of a wall, thence along a line of bearing 293° 01' and distance of 90.7 metres which follows closely a series of walls and fence, thence along that and other successive lines of wall of bearings and distances as follows:

<i>Bearing</i>	<i>Distance in metres</i>
203° 01'	93.4
293° 04'	152.5
23° 04'	10.6
113° 04'	14
23° 04'	57.1
293° 04'	2
23° 04'	3.4
293° 04'	12.1
23° 04'	22.2
293° 01'	2.2

to a point where it meets a line, thence along that and other successive lines of bearings and distances as follows:

<i>Bearing</i>	<i>Distance in metres</i>
23° 02'	577.1
23° 02'	129.5
23° 02'	713.4
113° 02'	2.5

to a point where it meets a fence, thence along successive lines of fence of bearings and distances as follows:

<i>Bearing</i>	<i>Distance in metres</i>
111° 20'	3
113° 57'	11.2
112° 52'	77.7
203° 05'	20
112° 56'	62.7
23° 02'	146
86° 31'	5.6
23° 10'	21.4

to a point where it meets a line, thence along successive lines of fence of bearings and distances as follows:

<i>Bearing</i>	<i>Distance in metres</i>
19° 45'	2.5
354° 08'	2.5
113° 04'	11.4
23° 02'	121.8

to a point where it meets a fence, thence along successive lines of fence of bearings and distances as follows:

<i>Bearing</i>	<i>Distance in metres</i>
23° 02'	57
20° 25'	6.1
13° 07'	6
5° 10'	6
356° 55'	6
350° 40'	3.1
347° 01'	3
342° 49'	3
342° 10'	24
342° 18'	21
349° 04'	2.9
4° 17'	2.9
19° 41'	2.9
34° 03'	2.9

48° 36'	2.9
63° 14'	2.9
72° 01'	12
72° 15'	21.6
147° 20'	27.2
160° 03'	36.9
160° 08'	38
141° 40'	29.1
165° 25'	30
171° 43'	29.6
171° 41'	29.9

to the point of commencement . The boundary of “CHANGI AIRPORT CARGO TERMINAL COMPLEX — FREE TRADE ZONE” is delineated in Plan V set out in [the Second Schedule](#).

(6) *Brani Terminal*

All that area occupied by “BRANI TERMINAL — FREE TRADE ZONE” containing an area of approximately 861,550 square metres and bounded by Keppel Channel and Selat Sengkir.

The boundary commences at the northwestern-most corner of the aforesaid “BRANI TERMINAL — FREE TRADE ZONE” which point’s co-ordinates are North 27,282.754 metres and East 26,954.037 metres of the Singapore Land Authority SVY 21 Datum and runs approximately as follows:

<i>Northing</i>	<i>Easting</i>
27,282.671	26,974.813
27,143.905	26,971.892
27,098.134	26,973.362
27,054.962	26,979.408
27,004.854	26,992.499
26,965.480	27,007.922
27,346.614	27,676.713
27,348.670	27,684.214
27,372.258	28,306.732
27,367.908	28,318.637
26,715.732	29,018.546
26,711.540	29,018.687
26,703.631	29,011.312
26,568.339	28,738.715
26,625.258	28,716.742
26,640.101	28,711.007

26,649.390	28,700.920
26,510.506	28,410.419
26,510.031	28,409.534
26,684.759	28,222.272
26,734.009	28,268.294
26,843.412	28,150.950
26,858.152	28,152.300
26,879.854	28,152.007
26,906.040	28,092.816
26,918.169	28,079.219
26,980.779	28,032.001
27,001.006	28,014.544
27,003.125	28,012.535
27,005.077	28,010.363
27,006.413	28,007.876
27,007.614	28,005.101
27,009.514	27,999.595
27,010.299	27,996.778
27,012.020	27,987.919
27,012.625	27,984.956
27,015.805	27,979.841
27,017.559	27,977.380
27,019.459	27,975.031
27,021.509	27,972.952
27,023.786	27,971.127
27,028.521	27,967.577
27,030.889	27,966.053
27,035.134	27,963.379
27,047.805	27,955.510
27,060.791	27,947.970
27,071.501	27,942.308
27,087.484	27,933.997
27,098.340	27,928.621
27,114.201	27,920.078

27,138.605	27,903.120
27,159.632	27,882.831
27,192.922	27,838.645
27,194.952	27,727.938
27,208.999	27,709.952
27,195.263	27,699.415
27,170.613	27,681.265
27,172.023	27,679.296
27,168.680	27,676.734
27,167.810	27,673.945
27,155.978	27,662.569
27,161.009	27,652.201
27,161.403	27,649.708
27,147.469	27,642.903
27,135.424	27,627.167
27,118.144	27,632.846
27,112.386	27,633.479
27,109.451	27,631.953
27,059.091	27,639.291
26,985.829	27,648.927
26,947.180	27,654.087
26,947.299	27,656.260
26,927.086	27,658.074
26,916.067	27,662.260
26,920.548	27,673.584
26,920.189	27,683.253
26,914.099	27,685.491
26,913.937	27,687.058
26,913.491	27,688.569
26,912.139	27,691.221
26,910.730	27,693.843
26,909.217	27,696.407
26,906.532	27,700.359
26,903.935	27,703.505

26,899.559	27,707.726
26,841.036	27,749.978
26,786.606	27,744.569
26,784.233	27,751.868
26,782.890	27,751.460
26,783.129	27,750.671
26,778.261	27,749.137
26,778.041	27,749.881
26,764.045	27,745.374
26,764.829	27,742.870
26,763.810	27,740.898
26,761.233	27,740.080
26,766.284	27,724.136
26,753.655	27,719.951
26,751.593	27,720.684
26,749.897	27,720.069
26,627.574	27,676.337
26,666.293	27,575.810
26,594.677	27,548.619
26,593.337	27,548.991
26,576.685	27,542.690
26,599.144	27,484.123
26,616.362	27,490.598
26,624.662	27,488.309
26,631.078	27,481.968
26,636.879	27,472.832
26,636.573	27,470.327
26,631.044	27,467.291
26,642.331	27,446.767
26,647.921	27,449.867
26,648.975	27,448.635
26,653.155	27,440.078
26,660.638	27,421.505
26,670.114	27,393.015

26,685.407	27,356.027
26,691.076	27,336.822
26,696.656	27,317.590
26,701.472	27,298.462
26,704.458	27,278.560
26,707.946	27,258.842
26,712.614	27,239.369
26,714.657	27,229.759
26,740.345	27,188.240
26,760.431	27,158.096
26,782.017	27,129.633
26,808.932	27,097.493
26,836.945	27,068.912
26,858.297	27,049.555
26,883.156	27,030.838
26,923.059	27,005.782
26,955.682	26,989.603
26,998.826	26,971.958
27,049.137	26,959.172
27,097.206	26,952.664
27,144.382	26,951.034
27,282.754	26,954.037

to the point of commencement. The boundary of “BRANI TERMINAL — FREE TRADE ZONE” is delineated in Plan VI set out in [the Second Schedule](#).

[\[S 637/2011 wef 01/12/2011\]](#)

(7) *Keppel Distripark*

All that area occupied by “KEPPEL DISTRIPARK — FREE TRADE ZONE” containing an area of approximately 17.1 hectares and bounded by Keppel Road, Kampong Bahru Road and Ayer Rajah Expressway.

The boundary commences at the northern-most corner of the aforesaid “KEPPEL DISTRIPARK — FREE TRADE ZONE” which point’s adopted co-ordinates are North 28,573.4 metres and East 27,517.9 metres. The point of commencement is 1,426.6 metres South and 2,482.1 metres West of the Survey Department’s origin (30,000 metres North, 30,000 metres East) of co-ordinates and runs approximately as follows:

<i>Bearings</i>	<i>Distances in metres</i>
132° 20’	15.0
144° 19’	1.7

133° 37'	253.3
133° 55'	109.0
181° 31'	5.5
196° 08'	10.9
220° 06'	18.9
218° 40'	22.6
227° 17'	234.1
227° 29'	78.6
227° 01'	114.4
230° 14'	105.7
228° 59'	10.3
140° 14'	2.2
229° 51'	2.1
316° 55'	2.2
229° 58'	103.4
221° 10'	12.7
281° 34'	14.7
316° 12'	36.7
324° 38'	9.9
333° 42'	7.7
340° 56'	5.9
344° 43'	85.1
351° 23'	34.3
01° 59'	29.4
09° 36'	58.6
05° 42'	6.0
352° 41'	6.5
343° 21'	4.6
335° 45'	4.8
328° 55'	2.5
316° 45'	2.2
303° 40'	7.6
292° 07'	10.7
336° 16'	7.5

66° 10'	23.3
64° 56'	15.6
62° 22'	23.3
66° 41'	21.2
65° 12'	11.8
55° 15'	10.9
48° 38'	11.8
43° 23'	27.8
49° 01'	27.8
49° 06'	22.2
49° 11'	21.2
58° 14'	2.9
68° 51'	2.7
79° 27'	2.8
89° 58'	2.7
100° 37'	2.8
105° 57'	15.0
122° 01'	12.0
227° 15'	2.7
136° 57'	11.9
47° 15'	2.5
137° 15'	92.6
47° 15'	81.7
317° 15'	108.8
322° 28'	3.6
348° 42'	5.8
342° 55'	2.9
349° 28'	2.6
356° 49'	3.0
03° 38'	2.5
10° 33'	3.1
17° 45'	2.5
24° 42'	3.1
31° 25'	2.4

38° 58'	3.4
45° 51'	2.4
49° 05'	56.4
45° 43'	4.5
42° 13'	5.8
37° 45'	12.0
47° 08'	7.9
30° 41'	9.1
22° 51'	10.1
13° 48'	13.0
07° 25'	9.5
359° 49'	9.8
353° 56'	6.4
347° 13'	6.4
354° 00'	23.2
335° 08'	29.5
343° 24'	36.3
342° 39'	6.6
353° 46'	5.5
05° 44'	8.0
17° 26'	5.5
28° 32'	7.9
42° 15'	20.4

to the point of commencement and are delineated in Plan VII set out in [the Second Schedule](#).

[\[S 637/2011 wef 01/12/2011\]](#)

(8) *Keppel Distripark Linkbridge*

All that area across Keppel Road occupied by “KEPPEL DISTRIPARK LINKBRIDGE — FREE TRADE ZONE” containing an area of approximately 1,126.114 square metres and bounded by Keppel Distripark and Keppel Terminal.

The boundary commences at the northern-most point of the aforesaid “KEPPEL DISTRIPARK LINKBRIDGE — FREE TRADE ZONE” which point’s co-ordinates are North 27,903.074 metres and East 27,364.688 metres of the Singapore Land Authority SVY 21 Datum and runs approximately as follows:

<i>Nothing</i>	<i>Easting</i>
27,903.074	27,364.688

27,860.798	27,403.783
27,859.669	27,405.011
27,858.099	27,406.980
27,857.359	27,408.039
27,856.265	27,409.812
27,855.543	27,411.158
27,854.925	27,412.460
27,854.369	27,413.796
27,853.909	27,415.066
27,853.586	27,416.084
27,852.899	27,418.881
27,852.641	27,420.413
27,852.587	27,420.812
27,838.901	27,404.912
27,838.828	27,404.855
27,841.129	27,402.248
27,843.772	27,399.725
<i>Northing</i>	<i>Easting</i>
27,849.253	27,394.688
27,893.477	27,353.816

to the point of commencement. The boundary of “KEPPEL DISTRI PARK LINKBRIDGE — FREE TRADE ZONE” is delineated in Plan VIII set out in [the Second Schedule](#).

*[S 637/2011 wef 01/12/2011]*

(9) *Pasir Panjang Terminal*

All that area occupied by “PASIR PANJANG TERMINAL — FREE TRADE ZONE” containing an area of approximately 3,420,874 square metres and bounded by West Coast Ferry Road, Harbour Drive and East Jurong Fairway.

The boundary commences at the north-west corner of the aforesaid “PASIR PANJANG TERMINAL — FREE TRADE ZONE” which point’s co-ordinates are North 30,310.960 metres and East 19,958.452 metres of the Singapore Land Authority SVY 21 Datum and runs approximately as follows:

<i>Northing</i>	<i>Easting</i>
30,310.960	19,958.452

30,379.671	19,999.428
30,381.413	20,006.311
30,342.539	20,071.497
30,339.635	20,091.384
30,351.646	20,107.502
30,546.550	20,223.557
30,551.091	20,240.407
29,906.306	21,320.624
29,869.758	21,365.527
29,821.876	21,398.075
29,817.741	21,400.081
29,785.465	21,421.246
29,759.801	21,450.075
29,733.778	21,493.712
29,729.466	21,492.073
29,727.543	21,495.291
29,689.185	21,472.434
29,682.480	21,476.318
29,662.431	21,480.608
29,654.066	21,482.524
29,653.109	21,482.220
29,650.346	21,481.723
29,650.450	21,482.235
29,631.330	21,486.135
29,630.348	21,485.807
29,624.709	21,487.028
29,622.976	21,483.066
29,617.831	21,487.275
29,613.691	21,492.476
29,611.201	21,498.090
29,610.071	21,504.127
29,610.517	21,509.957
29,612.301	21,515.525
29,615.343	21,520.407

29,617.460	21,522.826
29,622.191	21,526.419
29,652.877	21,544.645
29,675.925	21,558.468
29,676.280	21,558.676
29,665.669	21,576.687
29,665.949	21,576.976
29,664.318	21,579.712
29,670.700	21,588.051
29,671.148	21,598.540
29,534.343	21,827.941
29,531.511	21,826.251
29,533.076	21,820.182
29,530.381	21,809.517
29,539.109	21,807.310
29,537.738	21,801.880
29,540.650	21,801.144
29,537.930	21,790.382
29,539.969	21,789.866
29,537.004	21,778.135
29,563.642	21,732.080
29,560.167	21,710.639
29,556.630	21,696.631
29,559.497	21,695.661
29,563.525	21,691.779
29,563.137	21,691.541
29,566.543	21,685.904
29,571.593	21,677.302
29,577.882	21,666.673
29,577.105	21,663.675
29,576.812	21,663.745
29,572.225	21,645.593
29,578.306	21,644.062
29,577.489	21,640.817

29,536.871	21,650.882
29,522.222	21,651.559
29,513.636	21,654.323
29,510.741	21,656.273
29,507.470	21,658.212
29,407.108	21,830.001
29,411.735	21,832.843
29,408.390	21,838.506
29,403.955	21,835.785
29,402.728	21,837.875
29,405.950	21,850.841
29,413.074	21,855.226
29,412.472	21,856.315
29,408.958	21,862.754
29,407.754	21,864.930
29,405.016	21,863.329
29,400.361	21,871.056
29,387.562	21,863.290
29,294.250	22,016.307
29,293.755	22,021.456
29,294.024	22,023.880
29,294.690	22,026.293
29,295.784	22,028.550
29,297.252	22,030.559
29,299.254	22,032.451
29,300.607	22,033.431
29,369.985	22,074.900
29,371.123	22,075.500
29,373.366	22,076.360
29,375.750	22,076.835
29,378.156	22,076.943
29,379.047	22,076.876
29,380.781	22,076.638
29,346.487	22,134.127

29,345.773	22,133.627
29,344.717	22,134.930
29,345.325	22,135.467
29,336.599	22,145.544
29,284.400	22,193.816
29,267.055	22,209.479
29,204.069	22,171.384
29,209.648	22,162.115
29,218.414	22,147.586
29,209.270	22,141.469
29,201.829	22,136.403
29,224.649	22,098.086
29,243.049	22,067.195
29,265.630	22,029.284
29,290.639	21,987.317
29,312.212	21,951.098
29,333.126	21,916.048
29,327.739	21,912.731
29,300.554	21,889.125
29,270.427	21,863.182
29,266.683	21,865.611
29,234.426	21,846.447
29,204.585	21,828.657
29,176.664	21,812.013
29,144.503	21,792.842
29,115.347	21,775.442
29,057.401	21,740.932
29,028.902	21,723.769
29,028.714	21,721.644
29,028.489	21,719.292
29,027.678	21,716.628
29,026.134	21,714.386
29,017.639	21,709.369
29,016.925	21,710.628

29,015.883	21,710.242
29,012.160	21,716.351
29,011.264	21,717.854
27,859.493	21,030.855
29,219.594	18,748.791
29,747.865	19,063.811
29,809.217	19,453.740
28,973.974	20,856.100
29,565.507	21,208.277

to the point of commencement. The boundary of “PASIR PANJANG TERMINAL — FREE TRADE ZONE” is delineated in Plan IX set out in [the Second Schedule](#).

[\[S 637/2011 wef 01/12/2011\]](#)

(10) *Airport Logistics Park of Singapore*

All that area comprised of Lots 4110A, 4111K and 4112N and part of Lot 4113X Mukim No. 31 (Changi) occupied by “AIRPORT LOGISTICS PARK OF SINGAPORE — FREE TRADE ZONE” containing an area of approximately 248,020 square metres and bounded approximately as follows:

The boundary commences at the north-western corner of the aforesaid “AIRPORT LOGISTICS PARK OF SINGAPORE — FREE TRADE ZONE” which point of commencement is 40,417.5 metres North and 46,539.1 metres East of the Singapore Land Authority’s origin of co-ordinates (30,000 metres North, 30,000 metres East) and the boundary runs approximately as follows:

<i>Bearing</i>	<i>Distance in metres</i>
24° 56°	7.6
153° 41°	17.0
92° 57°	18.8
30° 43°	15.3
120° 43°	7.7
30° 43°	2.5
120° 43°	1.4
30° 43°	32.8
14° 05°	143.7
21° 19°	2.6
35° 45°	2.6
50° 11°	2.6
64° 37°	0.6
165° 52°	3.5
162° 50°	16.2
159° 49°	16.2

158° 18°	106.8
225° 53°	18.3
135° 53°	11.7
45° 53°	13.5
158° 18°	664.4
248° 18°	50.3
158° 18°	45.7
114° 23°	30.5
68° 18°	27.1
162° 57°	1.2
163° 37°	217.2
293° 18°	262.9
203° 18°	108.9
293° 18°	153.1
359° 04°	382.3
293° 01°	70.5
1° 12°	126.7
91° 12°	20.0
1° 12°	147.8
357° 49°	10.8
351° 24°	12.7
340° 59°	12.9
333° 44°	8.5
30° 43°	32.4
300° 43°	4.4
30° 43°	2.6
300° 43°	6.2
210° 43°	1.9
272° 57°	15.6
275° 31°	7.6
280° 39°	7.6
285° 47°	7.6
290° 54°	7.6
293° 28°	5.3

23° 08°	5.5
37° 35°	4.5
47° 28°	4.4
59° 14°	6.1
74° 02°	7.2
58° 37°	16.0

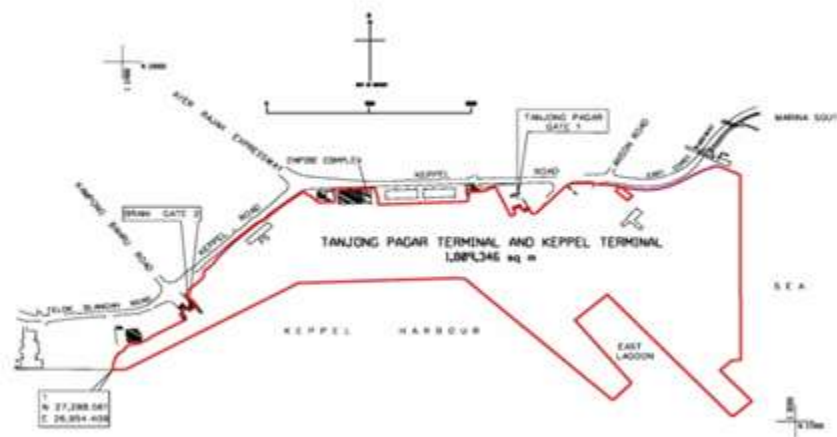
to the point of commencement. The boundary of “AIRPORT LOGISTICS PARK OF SINGAPORE — FREE TRADE ZONE” is delineated in Plan X set out in [the Second Schedule](#).

*[S 637/2011 wef 01/12/2011]*

## SECOND SCHEDULE

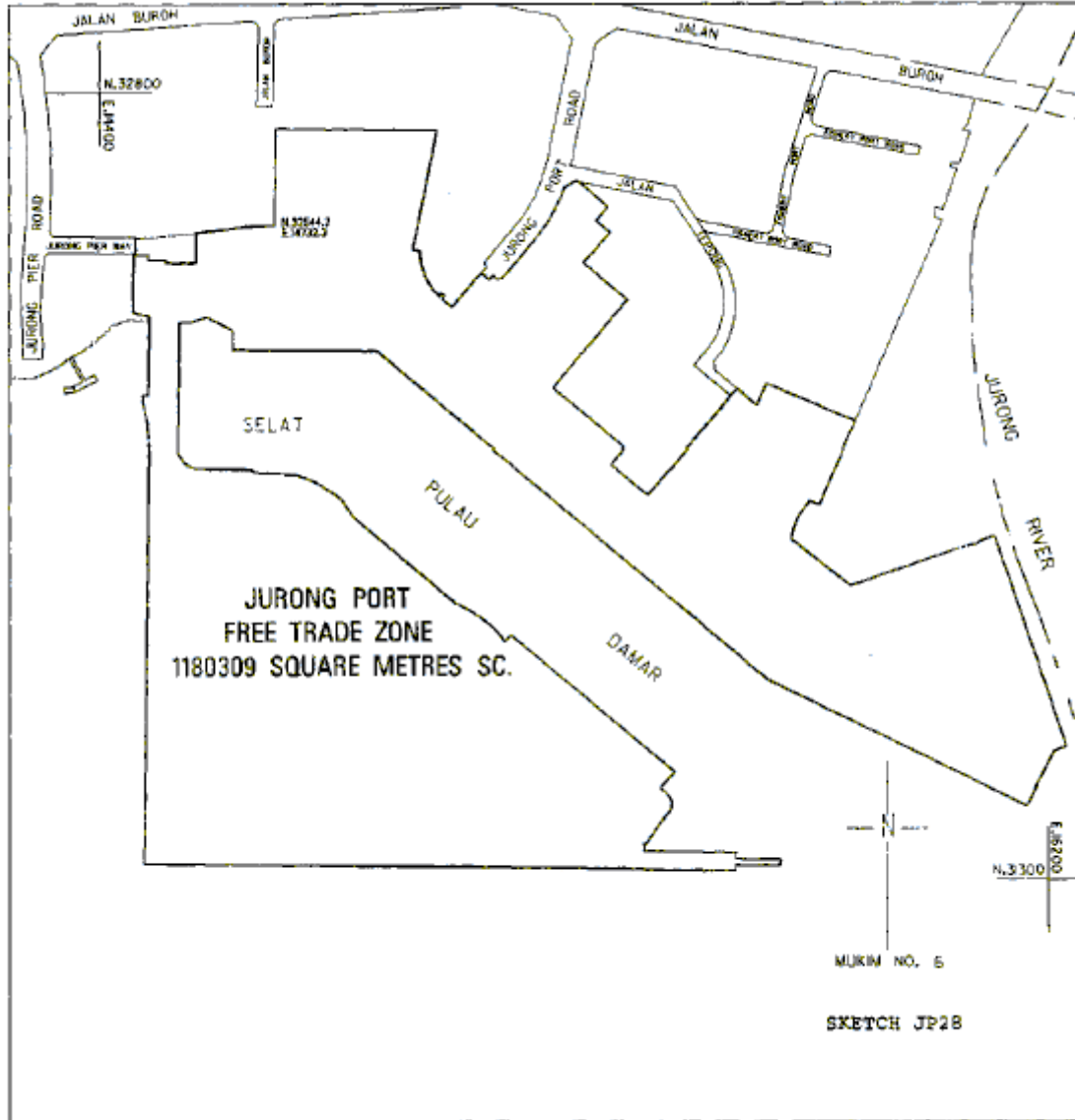
### PLAN I

#### TANJONG PAGAR TERMINAL AND KEPPEL TERMINAL — FREE TRADE ZONE

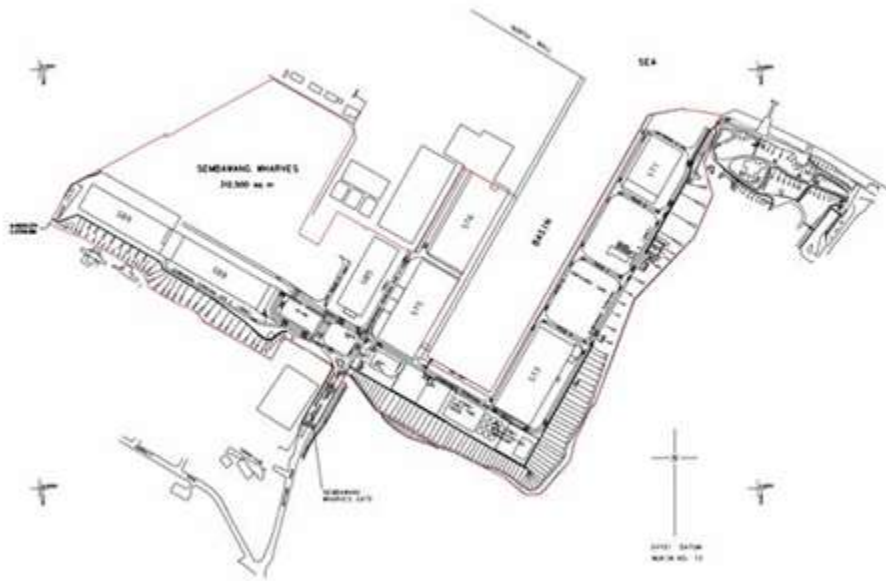


PLAN II

JURONG PORT (INCLUDING PULAU DAMAR LAUT) — FREE TRADE ZONE



PLAN III  
SEMBAWANG WHARVES — FREE TRADE ZONE

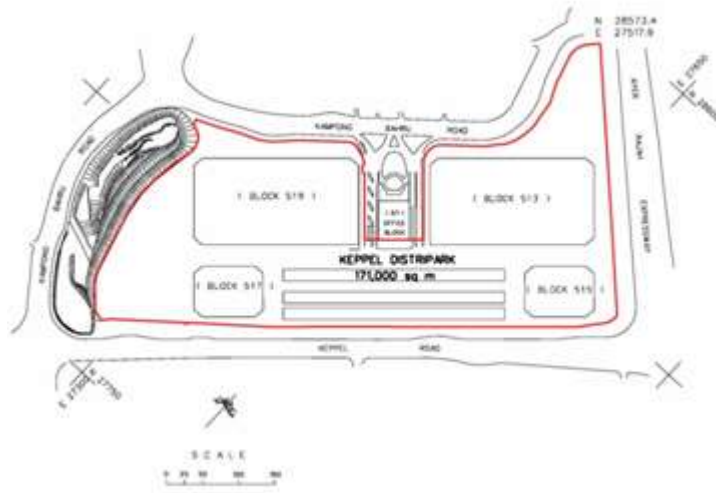


PLAN IV  
*Deleted by S 568/2009, wef 20/11/2009.*



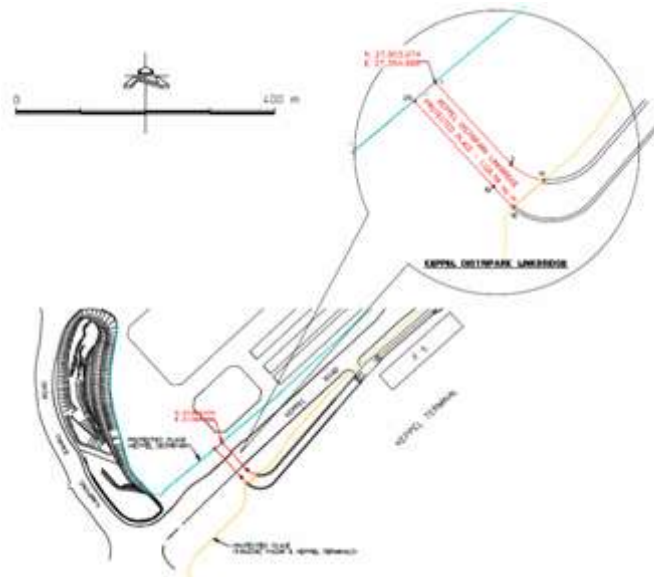
PART VII

KEPPEL DISTRI PARK — FREE TRADE ZONE



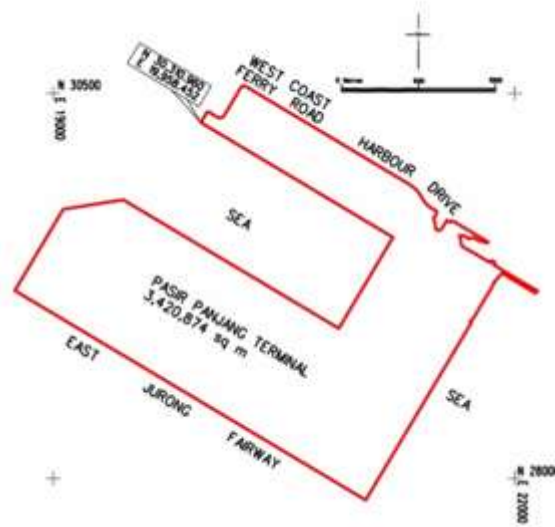
PLAN VIII

KEPPEL DISTRI PARK LINKBRIDGE — FREE TRADE ZONE



PART IX

PASIR PANJANG TERMINAL — FREE TRADE ZONE



PLAN X

AIRPORT LOGISTICS PARK OF SINGAPORE

