

Our Ref : Customs S04.24.V03

Circular no.: 05/2003

Date : 4 Feb 2003



**CUSTOMS AND EXCISE DEPARTMENT**

55 Newton Road

#07-01 Revenue House

Singapore 307987

**REPUBLIC OF SINGAPORE**

Telephone : 6355 2000

Telefax : 6250 8663

Homepage : <http://www.customs.gov.sg>

E-mail : [CED\\_Feedback@ced.gov.sg](mailto:CED_Feedback@ced.gov.sg)

All Traders and Forwarding Agents



## **CUSTOMS TANJONG PAGAR SCANNING STATION**

The volume of container transport by sea is increasing rapidly. Singapore is one of the busiest ports in the world where millions of containers are loaded and unloaded annually and this figure is expected to increase over the years.

2. Customs & Excise Department (CED) recently acquired two radiographic inspection systems to be deployed at our seaports. These advanced inspection systems would allow Customs to inspect containers quickly and improve Customs' detection capability at the seaports. It would also reduce the reliance on physical inspection of goods as the process offers a rapid, safe and non-intrusive means of verifying container contents.

3. The first inspection system will be deployed at the Tanjong Pagar Scanning Station for screening of inbound and outbound containers. The Tanjong Pagar Scanning Station is located next to Tanjong Pagar Gate 1. The scanning station will commence operations on 11 Feb 03 and operate round the clock.

4. From 11 Feb 03, hauliers collecting or delivering a container that has been selected for scanning would be prompted with a message 'GO X-RAY' in their pager after they have been cleared through the FTZ In-Gate. Upon receiving this message, the haulier is required to bring the container to the scanning station immediately. The scanning operations by Customs will take only a few minutes. We are pleased to inform you that the cost of scanning will be borne by Customs. A flowchart of the Customs scanning procedure is at **Annex A**.

5. After scanning the container, the consignee or agent may be notified if a physical inspection is required. If so, the consignee or agent will be given two options. They can either arrange for their own manpower and resources to unstuff the container at the Customs scanning station or engage one of the service providers at F5 warehouse.

6. If the consignee or agent is unable to arrange for the necessary manpower or resources within 2 hours of notification, the container will be sent to the staging area for storage pending the unstuffing operations. If the consignee or agent wish to engage one of the service providers at F5 warehouse, Customs will arrange for the container to be sent to the F5 operators' premises for the unstuffing operations. The consignee or agent will be billed directly by the service provider.

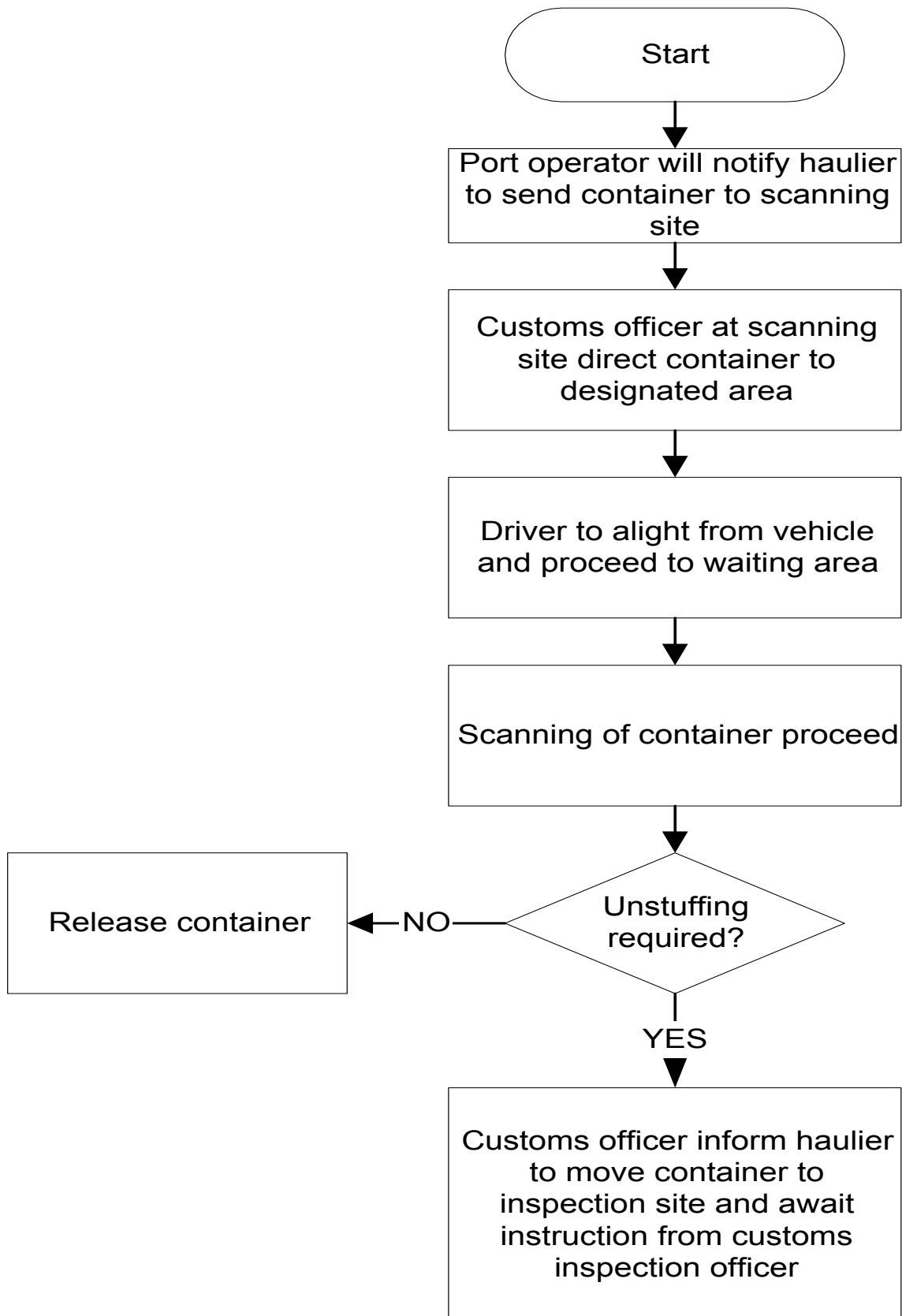
7. All unstuffing operations at the scanning station or F5 warehouse premises will be supervised by Customs. No customs supervision fees will be levied for the unstuffing operations at these sites. A flowchart of the unstuffing procedure for scanned containers is at **Annex B**.

8. More information on the radiographic inspection system, Customs scanning operations and physical inspection processes are available at this [FAQ](http://www.customs.gov.sg/circular/faq.doc) (<http://www.customs.gov.sg/circular/faq.doc>). If you require further clarification, please contact Mr Chua Sze How at Tel: 6276 5949 or Mr Lim Teck Leong at Tel: 6223 5041.



JASWANT SINGH  
ASSISTANT DIRECTOR-GENERAL (OPERATIONS)  
for DIRECTOR-GENERAL OF CUSTOMS & EXCISE

# Scanning Procedure for Container



# Unstuffing Procedure for Scanned Container

