

# Sharing on TradeXchange®





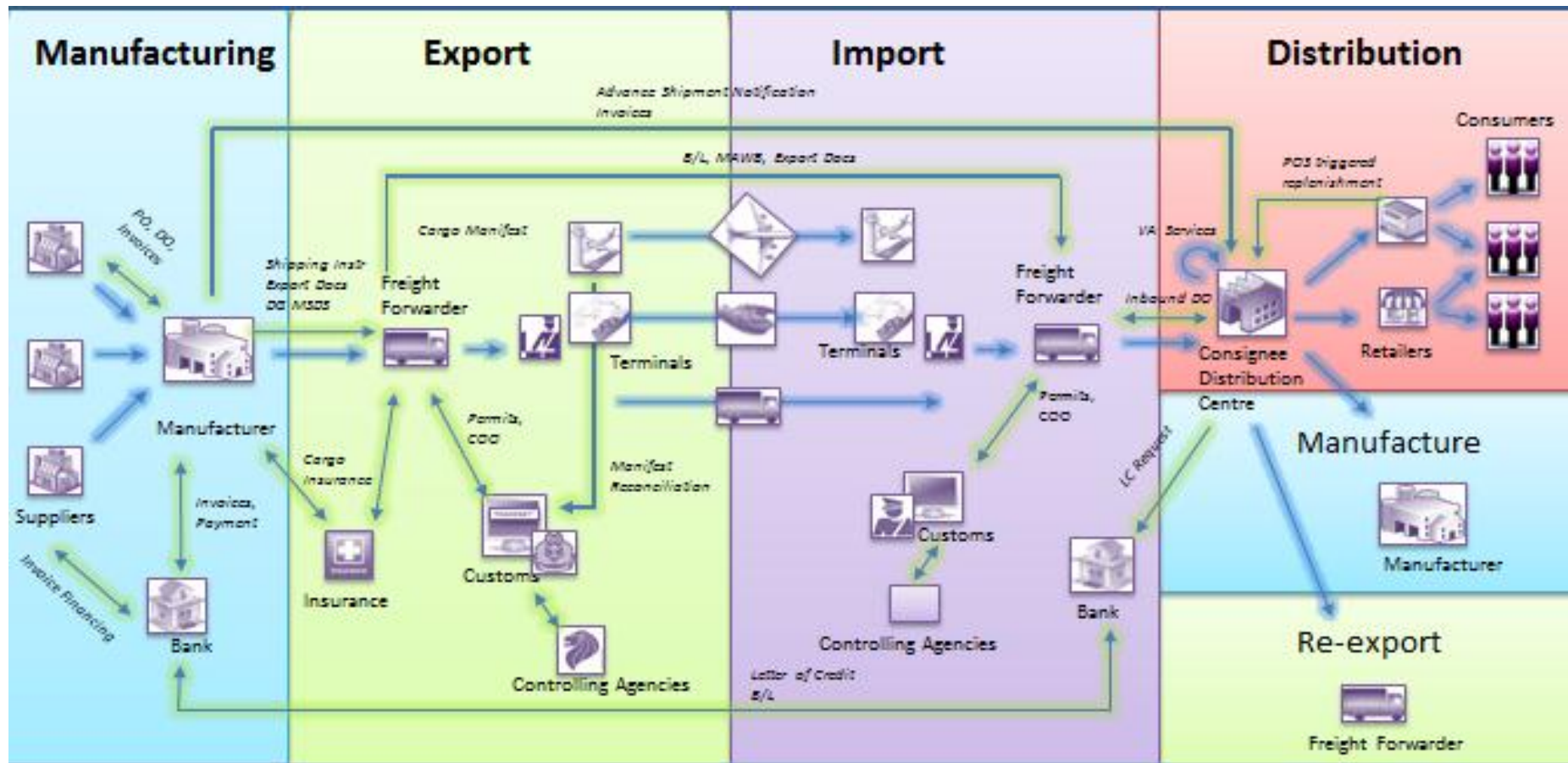
# Agenda

- Background: The TradeXchange<sup>®</sup> (TX) Programme
- TradeXchange<sup>®</sup> Services and Benefits
- Potential Assistance for Companies
- Useful Resources





Supply Chain flows are functionally difficult & structurally inefficient



➤ **Extremely Fragmented Landscape**

- One consignment can involve up to 25 different parties
- Parties have different priorities

➤ **Inefficient Data Flow**

- Up to 30-40 documents exchanged
- Many formats, many standards
- 60-70% of data re-keyed in at least once



# Re-engineering supply chain flows



### Enablers

- Common, neutral & secure platform
- Open access model for connectivity
- Common data standards for exchange of data.
- Data repository for re-use of data.

**Systems**

**Data**

**Processes**

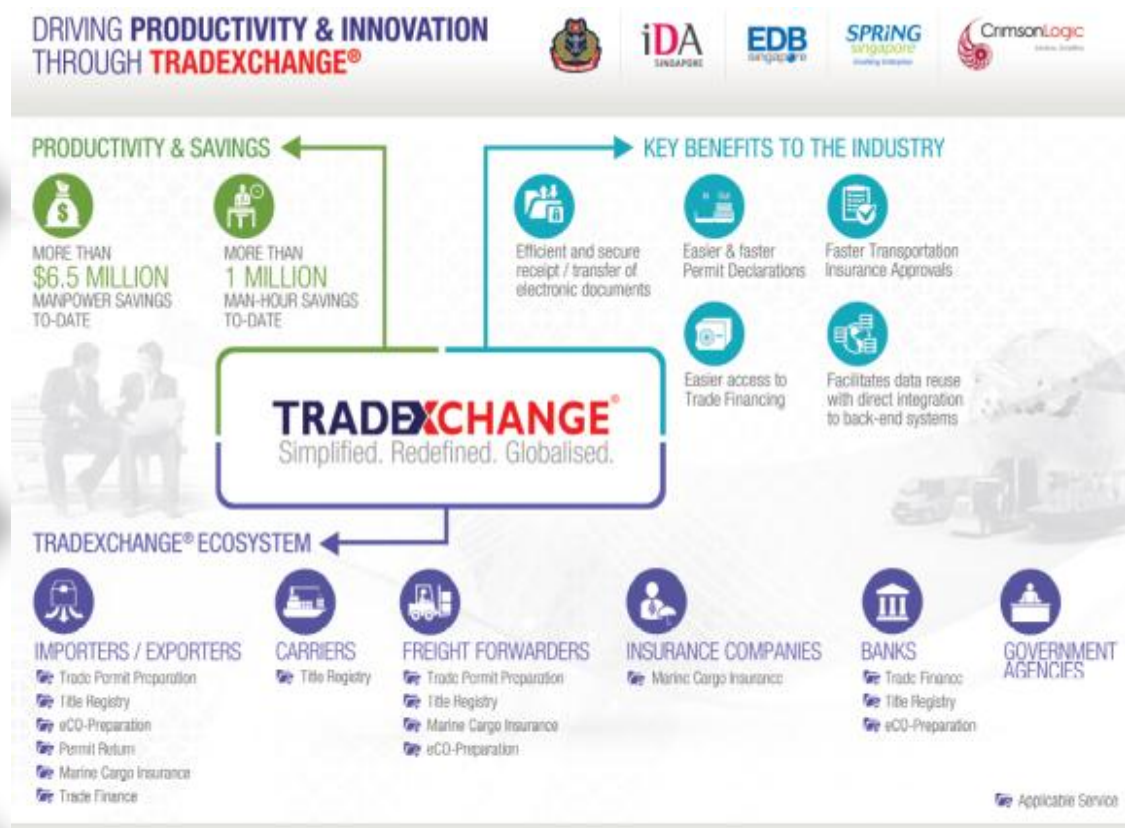


TX had already benefited >200 companies across sectors and for different processes

**Permit Preparation**  
Up to **50%**  
Time Savings in Trade Permit Preparation

**Marine Insurance**  
Up to **90%**  
Time Savings in Marine Cargo Insurance applications.

**Trade Finance**  
**Faster & Less Costly**  
In Factoring Application

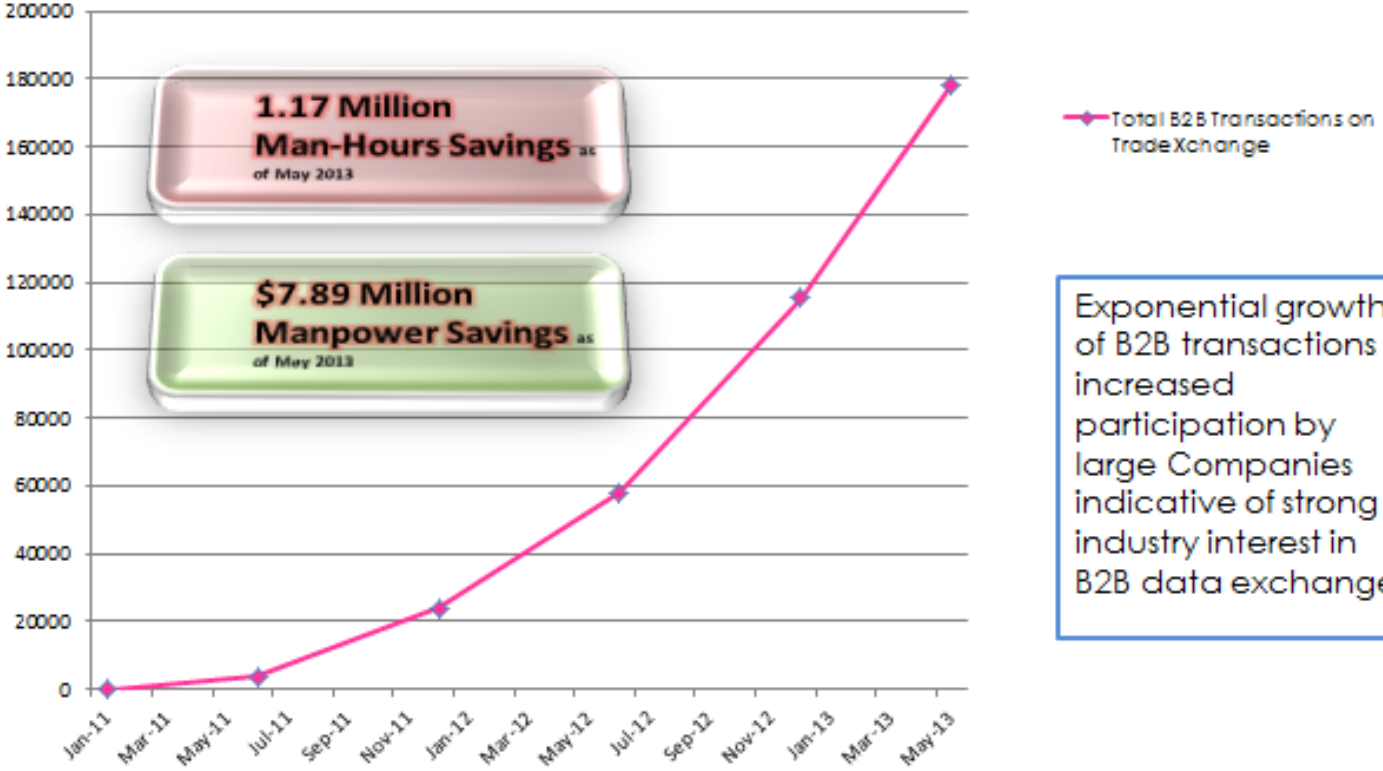


**SC & IDA brought industry together to streamline processes & develop standards, catalysed development of solutions and worked with industry leaders to raise awareness & widen adoption**



# Strong industry demand for B2B data exchange

**Total B2B Transactions on TradeXchange®**



Exponential growth of B2B transactions & increased participation by large Companies indicative of strong industry interest in B2B data exchange

